

# Parkheath

*Sold on Service*

---

**Willesden Lane NW6**

**£2,000 PCM (£462 per week) - Brent Band E**



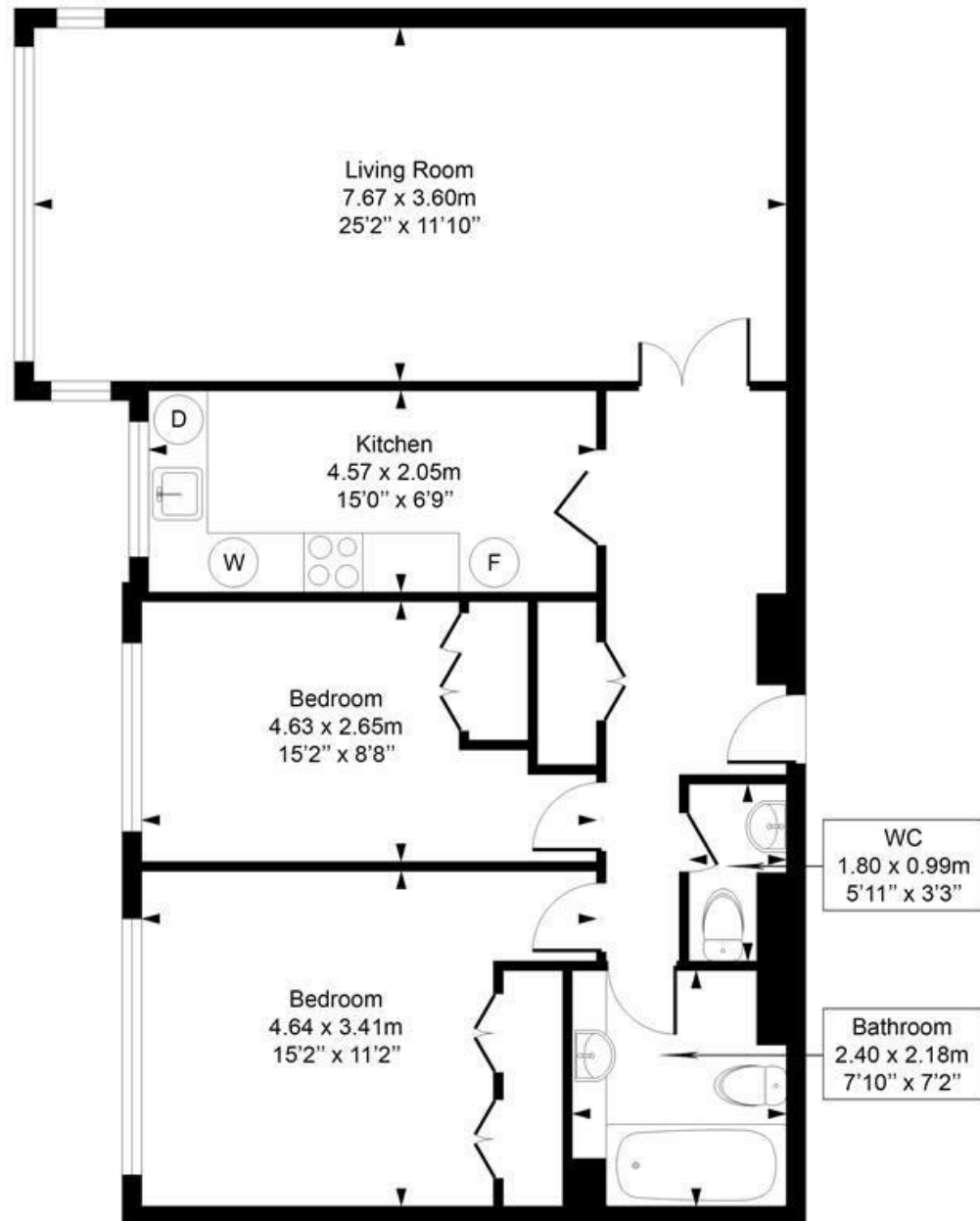
Spacious 2 double bedroom apartment  
4th floor of a purpose built block  
Reception/dining room with wood flooring  
2 good sized bedrooms with built in storage  
11 minute walk to Kilburn underground (Jubilee line)

Large communal garden  
Lift access and porter  
Separate fitted kitchen  
10 minute walk to Brondesbury Park overground  
EPC: Rating TBC, Council Tax: Brent band E

West Hampstead Office 020 7794 7111

## Willesden Lane

Approximate Gross Internal Area = 82.7 Sq m / 890 sq ft



### Fourth Floor

This plan is for layout guidance only. Drawn in accordance with RICS guidelines. Not drawn to scale unless stated. Windows & door openings are approximate. Whilst every care is taken in the preparation of this plan, please check all dimensions, shapes & compass bearings before marking any decisions reliant upon them.

ELLIE CLAIRE PHOTOGRAPHY LTD  
[www.ellieclairephotography.com](http://www.ellieclairephotography.com)

The particulars do not constitute part of an offer or contract. The particulars, including text, photographs and plans, are for the guidance only of prospective purchasers/tenants and must not be relied upon as statements of fact. The descriptions provided therein represent the opinion of the author and whilst given in good faith should not be construed as statements of fact. Nothing in these particulars shall be deemed a statement that the property is in good condition or otherwise or that any services or facilities are in good working order. All measurements are approximate